



resident guide

published by the City of Moorhead, January 2018

CITY SERVICES

Customer Service

Welcome to the City of Moorhead! We hope you find this guide a helpful resource. For additional information, please contact Customer Service and we will be happy to assist you!

218.299.5166

Moorhead City Hall | 3rd Floor | 500 Center Ave | Moorhead, MN 56560
cityofmoorhead.com | M – F, 8:00 am – 4:30 pm

Administration

Administration (general information)	500 Center Ave, 3rd Floor	218.299.5166
City Clerk	500 Center Ave, 3rd Floor	218.299.5304
City Manager	500 Center Ave, 3rd Floor	218.299.5303
Finance	500 Center Ave, 3rd Floor	218.299.5319
Human Resources/Jobs	500 Center Ave, 3rd Floor	218.299.5179

Engineering

Engineering	500 Center Ave, 4th Floor	218.299.5390
Stormwater flood plain	2121 28 St N	218.299.5386 (option 6)
Wastewater Treatment sewer maintenance	2121 28 St N	218.299.5386 (option 2)

Community Development

Assessor	500 Center Ave, 3rd Floor	218.299.5258
Building Codes	500 Center Ave, 4th Floor	218.299.5424
Economic Development	500 Center Ave, 4th Floor	218.299.5441
Environmental Health (Clay County)	715 11 St N	218.299.5004
Mass Transit (MATBUS)	650 23 St N (Fargo)	701.241.8140
Neighborhood Services	500 Center Ave, 4th Floor	218.299.5434
Planning and Zoning	500 Center Ave, 4th Floor	218.299.5370
Public Housing Agency (referral resource)	800 2 Ave N	218.299.5459
Rental Registration	500 Center Ave, 4th Floor	218.299.5434

Moorhead Public Library

Branch of Lake Agassiz Regional Library	118 5 St S	218.233.7594
---	------------	--------------

larl.org | M – Th, 9 am – 9 pm | F & Sa, 10 am – 6 pm | Su, closed

Emergency | DIAL 911

Dispatch (non-emergency; Fire and Police)

701.451.7660

Police

Police (non-emergency)

911 11 St N (as of fall 2018)

218.299.5120

Fire

Fire (non-emergency)

111 12 St N

218.299.5298

Fire Station 1 (north)

1120 1 Ave N

218.299.5432

Fire Station 2 (south)

2413 20 St S

218.299.5435

Parks and Recreation

Parks and Recreation Office/Sports Center

324 24 St S

218.299.5340

Golf Course: The Meadows

401 34 St S

218.299.7888

Golf Course: Village Green

3421 30 Ave S

218.299.7888

Hjemkomst Center

202 1 Ave N

218.299.5515

Senior Connections

202 1 Ave N

218.299.5514

Senior Meals

202 1 Ave N

218.299.5519

Public Works

Public Works Customer Service
garbage, recycling, street maintenance,
curbside pick-up (branches/yard waste)

700 15 Ave N

218.299.5422
218.299.5347

Solid Waste Transfer Station

2727 Hwy 10 E

218.299.5465

Compost Site

1800 Hwy 75 N

218.979.9516



Moorhead Public Service

Customer Service (electricity and water) 500 Center Ave, 2nd Floor 218.477.8000 (option 4)

After Hours Emergencies

i.e. power outage, watermain break

218.477.8080

Call Before You Dig

811

www.mpsutility.com | facebook.com/mpsutility | M – F, 8:00 am - 4:30 pm

Bill payment options

- **Online:** www.mympsbill.com
- **Automatic payment:** download form at www.mpsutility.com (right side of page)
- **Mail:** PO Box 779, Moorhead, MN 56561-0779
- **In person:** drop box (Moorhead Center Mall Atrium) or with customer service (2nd Floor)

cityofmoorhead.com | Resident Guide | 3

Moorhead Facts

Population: 43,840
Total Area: 22.2 square miles
County: Clay

State Legislative District: 4A
US Congressional District: 7



Parks and Recreation

Wide variety of programming for youth, adults, and seniors throughout the year as well as several special events for the community. The City of Moorhead takes pride in its 46 scenic parks, miles of bike and walking trails, playgrounds, swimming pools, shelters, golf courses, skating rinks, and dog park.

Volunteer

Get involved as a baseball coach, special event assistant, greeter, park program assistant, or guide. Volunteers may also Adopt-A-Flowerbed or Adopt-A-Park to help beautify our city. Call **218.299.5296** to learn more about volunteer opportunities.

Interactive brochure and schedule of events including registration
www.moorheadparks.com

Register by phone or in person at **218.299.5340**
Moorhead Sports Center | 324 24 St S

Public golf courses
The Meadows | Village Green
www.moorheadgolf.com



Voting

Elections in Moorhead

The City of Moorhead holds elections for Mayor and City Council every other year on even years. Mayor and Council members serve four-year terms.

Who is eligible to vote?

Generally, a person is eligible to vote if, at the time of the election, he or she is 18 years of age or older, a citizen of the United States, and has resided in Minnesota for at least 20 days.

How do I register to vote?

Contact the Clay County Auditor's Office at **218.299.5006** or claycountymn.gov.

Where do I vote?

Find your precinct and voting location at cityofmoorhead.com/voting.

Consider serving as an Election Judge

Paid volunteers are needed to staff polling places, administer elections, protect voters' rights, and register voters. For more information, contact the City Clerk at **218.299.5304**.

G O V E R N M E N T

Mayor and City Council | City



MAYOR
Del Rae Williams
218.299.5307

City Council meets the second and fourth Mondays of each month at 5:30 pm in the Council Chambers (Moorhead City Hall, 1st Floor), 500 Center Ave.

cityofmoorhead.com/government/mayor-city-council

FIRST WARD



Mari Dailey
218.299.5549



Sara Watson Curry
218.299.5541



Melissa Fabian
218.299.5547



Heidi Durand
701.541.2684



Joel Paulsen
218.299.5544



Brenda Elmer
218.299.5548



Steve Gehrtz
218.299.5542



Chuck Hendrickson
218.299.5545

Email the Mayor or Council members by using their firstname.lastname@cityofmoorhead.com

Boards and Commissions | City

The Mayor and City Council appoint citizens each year to boards and commissions to serve as advisory groups to the Council. Visit cityofmoorhead.com for dates, agendas, and minutes.

- Airport Committee
- Art & Culture Commission
- Board of Appeal & Equalization
- City Charter Commission
- Economic Development Authority
- Human Rights Commission
- Library Board
- Park Advisory Board
- Planning Commission & Board of Adjustment
- Public Housing Agency Board
- Public Service Commission

Get involved—the Mayor and Council are always looking for individuals to serve. Applications are accepted year-round and will remain on file for one year after receipt. If you are interested in serving on a board or commission, visit cityofmoorhead.com/government/boards-commissions for an application.

Clay County Commissioners | County

The Clay County Board of Commissioners meets the first four Tuesdays of each month at 8:30 am in the Clay County Courthouse, 807 11 St N, Moorhead.

218.299.5012 | claycountymn.gov

DISTRICT 1	Jim Haney
DISTRICT 2	Frank Gross
DISTRICT 3	Jenny Mongeau
DISTRICT 4	Kevin Campbell
DISTRICT 5	Grant Weyland

mn.gov | State

Governor Mark Dayton
MN Senator Kent Eken (District 4)
MN Representative Ben Lien (District 4A)
MN Representative Paul Marquart (District 4B)

usa.gov | Federal

President Donald Trump
US Senator Tina Smith
US Senator Amy Klobuchar
US Representative Collin Peterson



Recycling at your home



Always in the bin

✓ Newspapers & Magazines



✓ Cardboard & Pizza Boxes



✓ Plastic Bottles, Containers, & Jugs (#1-7)



✓ Steel, Tin, Aluminum, & Aerosol Cans



✓ Cartons (Milk, Juice, Soup, Broth, Wine)



✓ Glass Jars & Bottles



✓ Boxes: Food, Beverage, & Toiletries



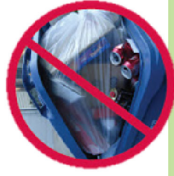
✓ Junk Mail, Office Paper, & Phone Books



How to Prepare Recycling:

Please Rinse, Remove All Caps, & Flatten Boxes Before Placing Loosely In Cart. Do Not Place Recycling In Plastic Bags.

Place Recycling Cart At Curb By 5:00 AM & At Least 2 Feet Away From Obstacles.





Recycling at your home Never in the bin



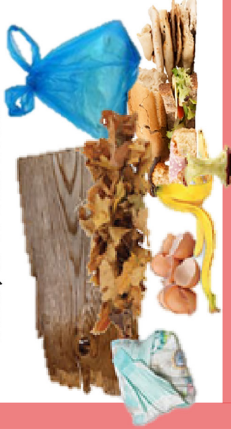
Never Plastic Bags



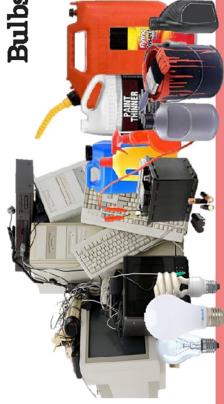
Never Styrofoam Containers & Packaging



Never Diapers, Food, Pet, Yard, & Wood Waste



Never Household Hazardous Waste, Electronics, Batteries & Bulbs



Never Ceramics, Glassware, & Mirrors



Never Aluminum Foil, Trays, & Scrap Metal



Never Medical Waste (Sharps, Lancets, Etc.)



Never Freezer Boxes & Ice Cream Cartons



Never Tangles (Extension Cords, Hoses, Holiday Lights, etc.)



Never Shredded Paper



MOORHEAD
MINNESOTA

City of Moorhead Public Works Dept.
www.cityofmoorhead.com/recycle
218.299.5422

NO-SORT RECYCLING PROGRAM

R E C Y C L I N G

Residential curbside schedule (Red: A Week | Blue: B Week)

Find your week and additional dates at cityofmoorhead.com/recycle

January 2018

Su	M	Tu	W	Th	F	Sa
	1	2	3	4	5	6
7	8	9	10	11	12	13
14	15	16	17	18	19	20
21	22	23	24	25	26	27
28	29	30	31			

February 2018

Su	M	Tu	W	Th	F	Sa
				1	2	3
4	5	6	7	8	9	10
11	12	13	14	15	16	17
18	19	20	21	22	23	24
25	26	27	28			

March 2018

Su	M	Tu	W	Th	F	Sa
				1	2	3
4	5	6	7	8	9	10
11	12	13	14	15	16	17
18	19	20	21	22	23	24
25	26	27	28	29	30	31

April 2018

Su	M	Tu	W	Th	F	Sa
1	2	3	4	5	6	7
8	9	10	11	12	13	14
15	16	17	18	19	20	21
22	23	24	25	26	27	28
29	30					

May 2018

Su	M	Tu	W	Th	F	Sa
		1	2	3	4	5
6	7	8	9	10	11	12
13	14	15	16	17	18	19
20	21	22	23	24	25	26
27	28	29	30	31		

June 2018

Su	M	Tu	W	Th	F	Sa
					1	2
3	4	5	6	7	8	9
10	11	12	13	14	15	16
17	18	19	20	21	22	23
24	25	26	27	28	29	30

July 2018

Su	M	Tu	W	Th	F	Sa
1	2	3	4	5	6	7
8	9	10	11	12	13	14
15	16	17	18	19	20	21
22	23	24	25	26	27	28
29	30	31				

August 2018

Su	M	Tu	W	Th	F	Sa
			1	2	3	4
5	6	7	8	9	10	11
12	13	14	15	16	17	18
19	20	21	22	23	24	25
26	27	28	29	30	31	

September 2018

Su	M	Tu	W	Th	F	Sa
						1
2	3	4	5	6	7	8
9	10	11	12	13	14	15
16	17	18	19	20	21	22
23	24	25	26	27	28	29
30						

October 2018

Su	M	Tu	W	Th	F	Sa
	1	2	3	4	5	6
7	8	9	10	11	12	13
14	15	16	17	18	19	20
21	22	23	24	25	26	27
28	29	30	31			

November 2018

Su	M	Tu	W	Th	F	Sa
				1	2	3
4	5	6	7	8	9	10
11	12	13	14	15	16	17
18	19	20	21	22	23	24
25	26	27	28	29	30	

December 2018

Su	M	Tu	W	Th	F	Sa
						1
2	3	4	5	6	7	8
9	10	11	12	13	14	15
16	17	18	19	20	21	22
23	24	25	26	27	28	29
30	31					

Garbage and Recycling

- Place garbage (collected weekly) and recycling (collected every other week) containers curbside on your day before 5 am
 - If your collection day falls on a holiday, items will be collected the following business day beginning at 4 am
 - Find your day and the Holiday Garbage Schedule at cityofmoorhead.com
- Excess garbage must be placed in a City of Moorhead pre-paid yellow bag, available for purchase at local grocery and retail stores—garbage not in yellow bags incurs a special service charge

Curbside Branch Pick-up

May – September | call-in collection available October through April

- Stack branches on your boulevard – do not place in cans, boxes, or other containers
- Piles 12 feet long, 8 feet wide, and 4 feet high are collected at no charge once a week
- Individual pieces must not exceed 8 inches in diameter—larger items and root balls incur an additional charge

Curbside Yard Waste Pick-up

mid-April – mid-November | drop-off collection available (limited basis) after curbside service ends

- Yard waste (small twigs no larger than a pencil, leaves, grass, and organic materials from gardens) is collected at the curb on your scheduled garbage day
- Yard waste must be placed in clear 32 gallon bags or 32 gallon cans that weigh less than 30 pounds—no limit on number of bags or containers

Compost Site | 1800 Hwy 75 N | 218.979.9516 | mid-April – mid-November

Monday – Friday, 8:00 am – 4:15 pm | Saturday, 8:00 am – 11:45 am | Sunday, closed

- Yard waste (small twigs no larger than a pencil, leaves, grass, and organic materials from gardens) must be in clear 32 gallon bags or 32 gallon cans that weigh less than 30 pounds
- Moorhead and Clay County residents may pick-up two yards of free compost per day

Collection Sites for Compost and Recycling | 218.299.5347

- Moorhead Youth Hockey Arena, 707 Main Ave SE
- Public Works Facility, 700 15 Ave N
- Southside Regional Park, 200 40 Ave S
- Woodlawn Point, 418 Elm St S
- Oakport Compost Collection, 809 58 Ave N (compost only)



Cleanup Week | May (1st full week) | Oakport, following Tuesday | www.cleanupweek.com

- Crews collect appliances (limit 2 per residence), furniture, tires (limit 4 per residence), and household goods at your curb on your scheduled garbage day—place by 5 am
- Crews will not pick up electronics such as TVs/computers or demolition/construction materials
 - Drop off at 1300 15 Ave N (behind the Clay County DMV) every Tuesday from 4 – 6 pm
- Garbage set out before Cleanup Week will be collected and you will be charged
- Bring furniture, household goods, and excess garbage to the Moorhead Transfer Station the week before Cleanup Week, free of charge—proof of City of Moorhead residency required

GOOD NEIGHBORS

Being Neighborly

You can make your neighborhood great by getting involved and taking pride in Moorhead. Knowing the people who live around you provides a stronger sense of neighborhood. The following are ideas to help you feel at home in Moorhead.

- Smile and know your neighbors—the number one way to be a good neighbor is to be friendly.
- Start a Neighborhood Block Club—it promotes a sense of community and helps everyone watch out for the neighborhood together. Contact the Community Policing Coordinator at **218.299.5143** for help getting started.
- Celebrate considerably and watch the noise—realize that not everyone is on your schedule. Generally speaking, in residential areas, use special consideration with noise between 10 pm and 6 am.
- Enjoy the outdoors—recreational fires are a great way to get to know neighbors, but there are a few things to remember. Learn more at **moorheadfire.com** or call **218.299.5298**.
- Be responsible with pets—pets are wonderful companions, but keep good habits in mind like leashing, minimizing barking/howling, and picking up waste. Additionally, realize that roaming cats can be a menace to our neighbors' sandboxes and gardens.
- Get to know Neighborhood Services—if you are concerned with parking, trash, junk vehicles, long grass, weeds, standing water, snow/ice removal, or general problem reporting, contact Neighborhood Services via phone at **218.299.5434** or via email at **neighborhood.services@cityofmoorhead.com**.

History of Moorhead

Moorhead was founded in 1871 and is named after William G. Moorhead (1811-1895), a director of the Northern Pacific Railway. The railway provided the stimulus for economic and population growth in the Moorhead area. Individuals moved west to take advantage of the Homestead Act, through which they were given acreage of property in exchange for farming the land and making their home in the area.

The Red River of the North served as a transfer point for goods and passengers between the Twin Cities of Minneapolis and St. Paul and Winnipeg, Manitoba. Goods were hauled by oxcart from St. Cloud, MN, to Moorhead, then loaded onto riverboats for the journey north on the Red River.

Moorhead was officially incorporated in 1881, and later that same decade added electric, water, sewer, fire, and police services. That's also when Moorhead developed a reputation as "Sin City," with more than 100 bars at a time when neighboring Fargo, ND did not allow the sale of alcohol.

Today, Moorhead is still considered a transcontinental crossing. Interstates I-94 and I-29 intersect just west of the city limits. While distribution and transfer industries remain a vital part of our business environment, education, and service industries have played an increasingly important role.

For more Moorhead history, contact the Historical & Cultural Society of Clay County at **hcsconline.org** or **218.299.5511**.

K E E P I N T O U C H

Sign Up for eNotifications

Sign up to receive emails when news, events, and city service alerts are posted on the City's website cityofmoorhead.com. Click the eNotification link at the top of the home page to sign up today!

Events and Meetings Calendar

Visit cityofmoorhead.com for a complete list of events, programs, and meetings. Want city meetings at your fingertips? Subscribe to the meetings calendar!

Social Media



facebook.com/cityofmoorhead

#MoorheadProud



@cityofmoorhead

CodeRED® Emergency Network

This system will notify you via telephone of emergency situations, critical community alerts, severe thunderstorm warnings, flash flood warnings, and tornado warnings within moments of being issued by the National Weather Service. Register your address and phone number today at cityofmoorhead.com/codered.

Current Projects

Construction season can be challenging, but there is a way to stay up-to-date on local transportation and public safety improvement projects. Find project details including start/end dates, contractor, project manager, and project type. Explore the interactive map at cityofmoorhead.com/departments/engineering/current-projects.



City of Moorhead
500 Center Ave
P.O. Box 779
Moorhead, MN 56561

PRSTD STD
U.S. POSTAGE
PAID
Permit No. 478
Moorhead, MN 56560

CAR-RT-SORT

ERCWSS
POSTAL CUSTOMER

Metro Area Transit (MAT)

MATBUS Fixed Route | 701.232.7500

- 25 routes reaching Moorhead, Dilworth, Fargo, and West Fargo
- **NEW:** Expanded fixed route service to make traveling in Moorhead easier than ever—Routes 1, 2, 3, 4 and 5 now run until 11:15 pm, Monday-Saturday (arrive every 30 minutes)

Metro Senior Ride | 701.356.7433

- For seniors age 60+

MAT Paratransit | 701.235.4464

- Door-to-door service for persons with disabilities

Ground Transportation Center | 502 NP Ave, Fargo, ND

- Purchase tickets and passes including the **90-day Youth Pass**. Youth grades K–12 can take unlimited rides on MATBUS fixed routes—just \$26! Available year-round, this pass is a great option for getting busy kids to school, activities, and more.



MATBUS Administrative Office | 650 23 St N, Fargo, ND | 701.241.8140
matbus.com | facebook.com/matbus | @matbus | YouTube: matbusfm
matbus.areavoices.com | MATBUS app (Apple or Google)

**MATBUS
Free Ride
Coupon**



Use for one free ride
on MATBUS fixed routes!

*one coupon per person
not valid on MAT Paratransit
expires June 30, 2019

**MATBUS
Free Ride
Coupon**



Use for one free ride
on MATBUS fixed routes!

*one coupon per person
not valid on MAT Paratransit
expires June 30, 2019

