

MOORHEAD FIRE  
DIVISIONS  
2003  
ANNUAL REPORT



# TABLE OF CONTENTS

Mission Statement .....	2
Organizational Chart .....	3
Suppression Report .....	4
Training Report.....	6
Staffing Report .....	7
NFPA Report .....	8

## *Moorhead Fire Department Mission Statement*

*The mission of Moorhead Fire & Rescue is to save lives and property from hostile fire, medical emergencies, hazardous materials incidents, and natural disasters in the most effective and efficient manner.*

*These protection services will include fire suppression, fire prevention, public education, inspection and plan review, and fire cause determination.*

*It is our intention that resources will be equally available to all citizens for the well-being of our community.*

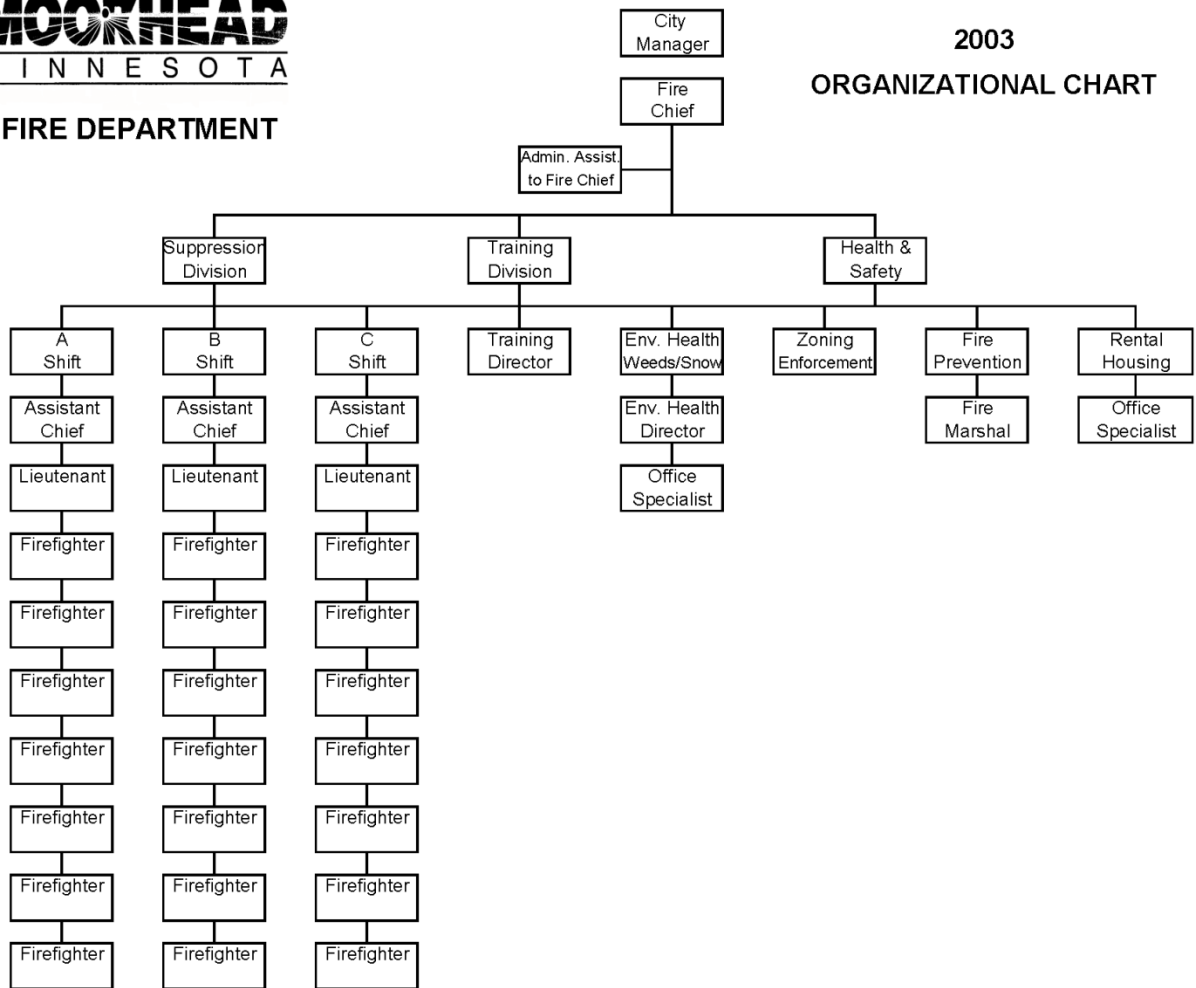
# ORGANIZATIONAL CHART



## FIRE DEPARTMENT

2003

## ORGANIZATIONAL CHART



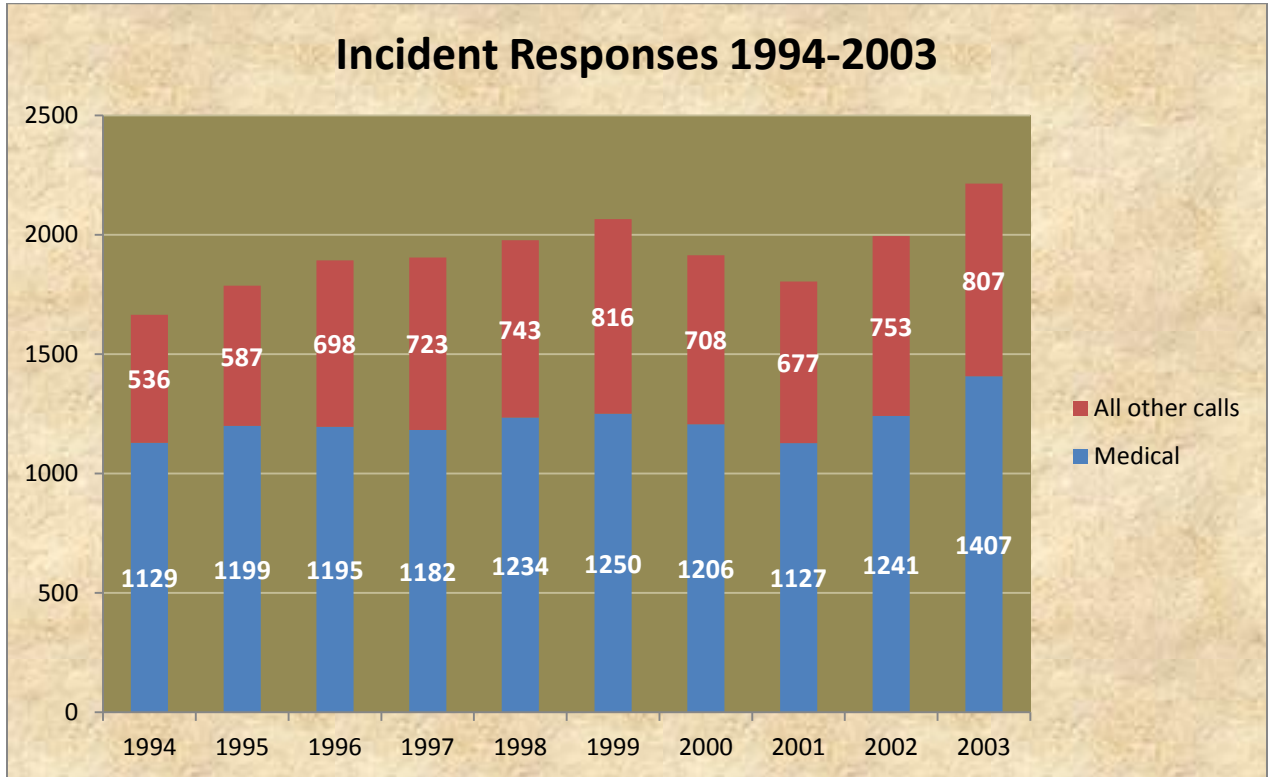
In 2002, departments City-wide were challenged to meet a seriously declining budget in 2003. Several options were discussed including staff reductions and reorganizations to address shortfalls in State revenue sharing. As a result, building codes were transferred to the Development Services Division of the newly formed Community Services Department.

The Fire Department retained environmental health services including neighborhood snow, weed, and other nuisance issues. The rental housing inspector positions were eliminated and these services were transferred to the Suppression division.

Our primary focus is retaining staff to respond to emergency incidents. Absorbing inspection duties into the suppression staff was found to be the only way to avoid reductions in emergency services personnel.

# SUPPRESSION REPORT

There were 2,214 emergency responses in 2003. This is an increase of 11.04%, as compared to the total of 1,994 in 2002. The stacked bar graph below represents the 10 year trend of our incidents. More detailed incident response information may be found in the NFPA report at the end of this annual report.

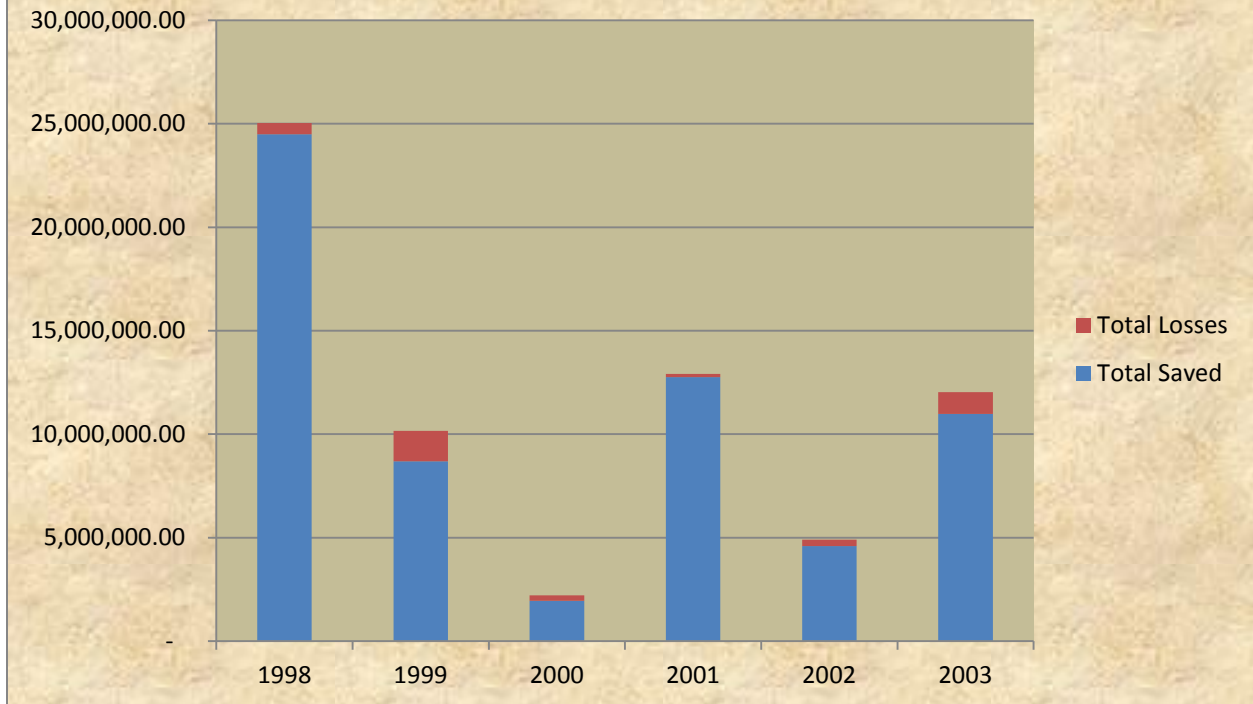


*The GTA Co-op elevator was demolished to make way for future development along the 1<sup>st</sup> Avenue North corridor.*



*Citizen's Fire Academy preparing to conduct live burn training.*

## Dollar Value of Property and Content 1998-2003



Year	1998	1999	2000	2001	2002	2003
Total Losses	540,588	1,470,095	254,810	162,038	300,175	1,054,120
Total Value	25,034,282	10,155,595	2,208,660	12,915,794	4,899,225	12,029,520
Total Saved	24,493,694	8,685,500	1,953,850	12,753,756	4,599,050	10,975,400



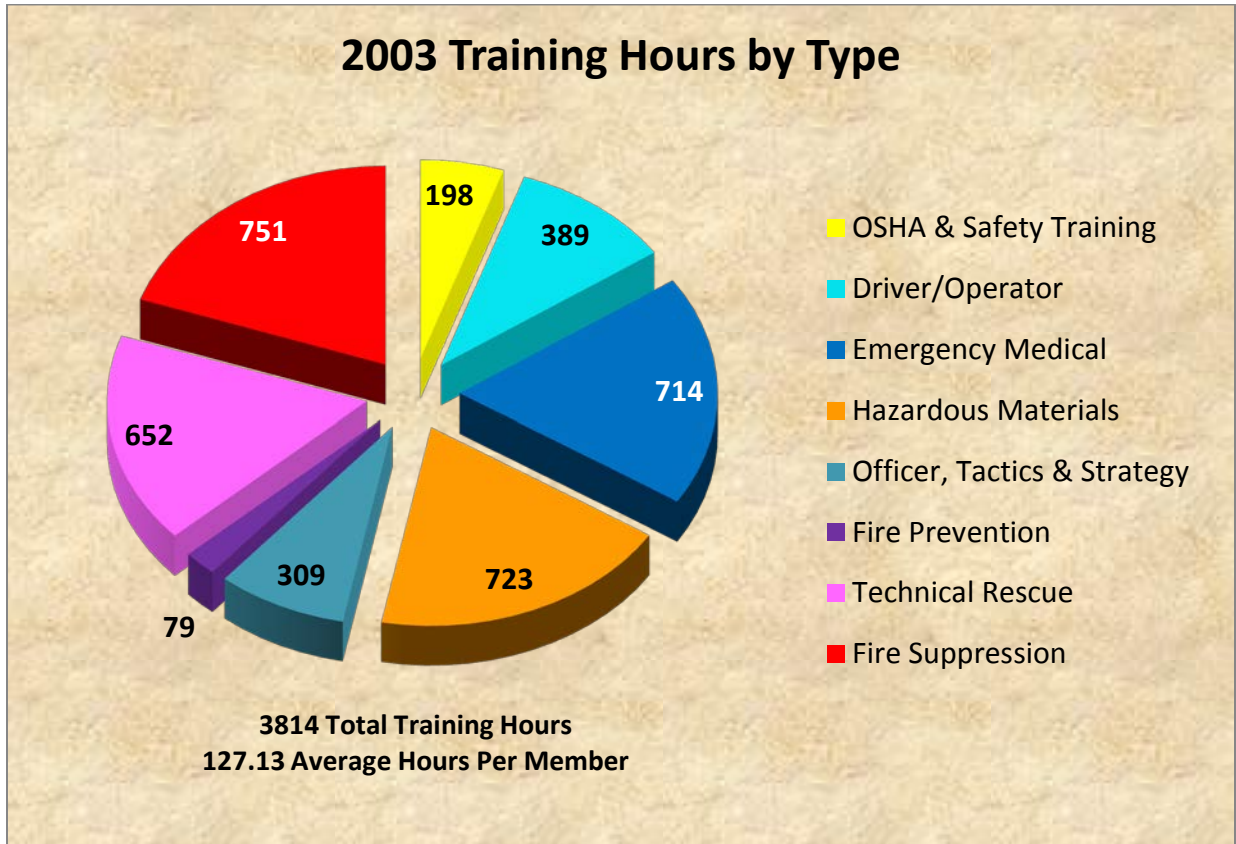
*This year we took delivery of a new aerial ladder truck with 100 feet of vertical reach, replacing a 1972 85 foot ladder truck which was sold for \$14,000 to the Crookston, MN Fire Department.*





# TRAINING REPORT

In 2003 we completed 3,306 total contact hours of training across many disciplines required to maintain our proficiency and ability to respond to the variety of hazards that face our community.



*Training to rescue a victim in a basement.*



*Escaping an intense fire through a window.*

# STAFFING REPORT

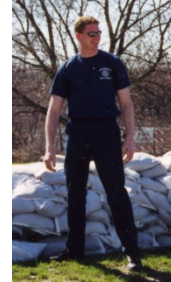
## RETIREES



Dalan Rasmussen  
Firefighter  
August 1, 1970 to 2003



Daryl Hendricksen  
Assistant Chief  
July 15, 1975 to July 31, 2003



Mike Strom  
Firefighter  
August 28, 2000 to January 6, 2003  
*Now working for Rochester Fire, MN*

## PROMOTIONS



Clay Dietrich, Assistant Chief  
October 27, 2003



Ron Sorum, Lieutenant  
November 14, 2003

## NEW HIRES



Ryan Muchow, Fire Fighter  
March 10, 2003



Eric Welk, Fire Fighter  
December 15, 2003



Dave Allen, Fire Fighter  
December 15, 2003

# NFPA REPORT

The following are the applicable statistical sections of the 2003 NFPA report that are used by the Moorhead Fire Department.

**NATIONAL FIRE PROTECTION ASSOCIATION FIRE EXPERIENCE REPORT**  
**MOORHEAD FIRE DEPARTMENT**  
 January 2003 to December 2003

**Part II: MAJOR FIRES**

Date	Name of Occupant or Owner, Property Use, and Address	Number of Civilian Fire Deaths	Property Loss
2/21/2003	UNITED BLOOD SERVICES Parking garage, general vehicle 510 28 ST N	0	\$150,000.00
8/8/2003	1 or 2 family dwelling 1228 N 12 ST	0	\$158,900.00
9/11/2003	NELSON-HARTMAN, CARRIE 1 or 2 family dwelling 1309 ELM ST S	0	\$180,000.00

**Part IV: BREAKDOWN OF FALSE ALARM RESPONSES**

Types of False Alarm	Number of Incidents
1. Malicious, Mischievous False Call	35
2. System Malfunction	60
3. Unintentional	298
4. Other False Alarm	9

**Part V: INTENTIONALLY SET FIRES IN STRUCTURES AND VEHICLES**

	Number Of Fires	Number of Civilian Fire Casualties		Estimated Property Damage
		Deaths	Injuries	
1. Structure Fires Intentionally Set	2	0	0	\$12,000.00
2. Vehicle Fires Intentionally Set	1	0	0	\$8,800.00



**Part III: BREAKDOWN OF STRUCTURE FIRES AND OTHER FIRES AND INCIDENTS**

A. Fires In Structures By Fixed Property Use (Occupancy) (all in Section A are Incident Type 110-129)	Number Of Fires	Number of Civilian Fire Casualties		Estimated Property Damage
		Deaths	Injuries	
1. Private Dwellings	11	0	0	\$433,250.00
2. Apartments	10	0	1	\$263,900.00
3. Hotels and Motels	0	0	0	\$0.00
4. All Other Residential	1	0	0	\$0.00
5. TOTAL RESIDENTIAL FIRES	22	0	1	\$697,150.00
6. Public Assembly	0	0	0	\$0.00
7. Schools and Colleges	3	0	0	\$0.00
8. Health Care/Penal Institutions	0	0	0	\$0.00
9. Stores and Offices	1	0	0	\$1,000.00
10. Industry/Utility/Defense/Labs/Manufacturing	2	0	0	\$35,000.00
11. Storage in Structures	2	0	0	\$147,000.00
12. Other Structures	0	0	0	\$0.00
13. TOTAL STRUCTURE FIRES	30	0	1	\$880,150.00
14a. Highway Vehicles	9	0	0	\$169,700.00
14b. Other Vehicles	1	0	1	\$0.00
15. Non-Structure/Non-Vehicle	1	0	0	\$0.00
16. Brush/Grass/Wildland	10	0		
17. Rubbish/Dumpsters	18	0		
18. All Other Fires	1	0	0	\$0.00
19. TOTAL FOR FIRES	70	0	2	\$1,051,620.00
20. Rescue/Emergency Medical Responses	1,407			
21. False Alarms	402			
22. Mutual Aid Given	4			
23a. Hazmat Responses	40			
23b. Other Hazardous Responses	27			
24. All Other Responses	264			
25. TOTAL FOR ALL INCIDENTS	2,214			

	Number of Confined Fires	Number of Nonconfined Fires
5. Residential Fires (line 5 above)	6	16
13. Structure Fires (line 13 above)	10	20