



Winter 2018-2019

Published by the City of Moorhead

## Excitement Builds for Moorhead Community Fund

Residents of a growing, energetic community such as Moorhead crave an array of park amenities, recreational activities, artistic and cultural experiences. Earlier this year, Moorhead’s Park Advisory Board and Arts & Culture Commission went looking for innovative ideas to fund more community amenities for our residents and visitors without relying exclusively on property taxes and user fees.

These efforts have resulted in establishing the Moorhead Community Fund through the Fargo Moorhead Area Foundation, approved by the Mayor and City Council in September. The Community Fund provides an opportunity to raise money for future amenities through tax-deductible donations from individuals and organizations. The FM Area Foundation will manage the funds and

ensure that the donations are invested in a manner that satisfies IRS charitable giving requirements.

Even before the formal documents for the Moorhead Community Fund were signed, the first donation was in the works: an anonymous donor contributed \$25,000 for the purpose of “Moorhead Proud” art! Won’t it be fun to see Moorhead’s public art collection grow by means of this gift?

The Moorhead Community Fund will have two parts:

- Pass-through account: Donations given toward known projects or otherwise intended to be spent in the near to mid-term on community amenities
- Permanent Endowment: Gifts intended as a perpetual legacy in which the

principal remains and spending is generally limited to earnings on the principal while the principal is maintained as a permanent asset.

**Projects on the horizon:** The future project list is unlimited, but here is a start!

**Inclusive Playground:** A sub-account within the Moorhead Community Fund will be dedicated to a modern inclusive playground thoughtfully designed to provide a safe place where children of all abilities can play together.

**Matson Field Enhancements:** The pass-through account will hold funds raised by a group of community organizers for a grandstand and scoreboard at Matson Field to enhance Moorhead’s baseball experience. Fund raising is underway for this project.

Donors may also choose to give to less specific categories of “**Parks & Recreation**” or “**Art & Culture**” to provide flexibility for funds to be used for other projects as they become identified. Our community will continue to dream up new ideas for amenities that we can all enjoy in future years, and the Moorhead Community Fund will help us raise the money to do so.



**South Moorhead Dog Park:** Another project in the fund raising stage is a dog park to be located in south Moorhead to allow our south side furry residents access to off-leash exercise and social activity with other dogs and their owners.

For additional information about the Moorhead Community Fund, please contact Parks & Recreation Director Holly Heitkamp at 218.299.5515 or the Fargo Moorhead Area Foundation.

# Street Lights

Street lighting is important for safety in our neighborhoods. If you notice that a street light is out near your home, please submit a request to have it fixed. Contact Moorhead Public Service at:  
[customer\\_service@mpsutility.com](mailto:customer_service@mpsutility.com)  
 or call 218.477.8000 (option 4).

## Electric Car Charging Station



Moorhead Public Service, in conjunction with its power supplier, Missouri River Energy Services, is proud to announce the first Level 3 high-powered electric car charging station in the FM area. This high-powered charger can provide a full charge in as little as 30 minutes, compared to a traditional charging station which can take six to 12 hours to complete a charge. The charging station is located on 28th Avenue South, near the intersection of Highway 75 and Interstate 94 and is expected to be operational November 2018.

## From Your Assessor's Office: Understanding How Your Property Is Valued

Occasionally, the Assessor's Office receives questions regarding how value is determined for property tax purposes.

According to the Minnesota Department of Revenue (DOR), the value determined by the assessor is the price the property would likely sell for on the open market is called the estimated market value (EMV). Estimating market value has many components including:



- **Classification.** Type of property (Residential, Agricultural, Commercial, etc.)
- **Mass Appraisal.** Assessors are required to inspect each property within the city limits in person at least once

every five years. Information such as size, age, condition, quality, basement finish, and features such as fireplaces, porches, and decks are collected and updated.

- **Value Computation.** Property information collected during mass appraisal is entered into the computerized appraisal system. Pricing is then calibrated to Moorhead's market based on Sales Analysis.
- **Sales Analysis.** Sales ratio studies are ongoing. Sales data is collected from October 1 of a given year to September 30 of the following year and is obtained from the sales of real estate within the city. The sales ratio is calculated by dividing the estimated market value by the sales price.
- **Assessment Level.** State law requires assessors to value property at its estimating selling price. The State Board

of Equalization requires the overall level of assessment to be between 90% and 105% of market value.

The goal of the Assessor's Office is to maintain a fair, equitable and accurate assessment every year, so that no property owner pays more or less than their fair share of the total property tax.

We want all City of Moorhead property owners to understand the process in estimating the value of your property. Please feel free to call the Assessor's office with any questions you may have at 218.299.5258.

Visit [www.moorheadproperty.org](http://www.moorheadproperty.org) for property information. In addition, you can find helpful information on the Minnesota DOR website. Visit [www.revenue.state.mn.us](http://www.revenue.state.mn.us) and search for "Property Tax Fact Sheets" to learn more.

# Woodlawn Water Tower: A Reflection of the Community



The Woodlawn water tower has a new coat of paint and an updated new design! Before the painting process began, much planning occurred and community input was considered. The Woodlawn neighborhood was surveyed and results displayed four key elements Moorhead prides itself on – nature, history, education, and recreation. Artists Stephen Dorsey and Jack Lunde listened and considered the community ideas and feedback. They worked to develop artistic options that were presented to a community review group, led by Moorhead Public Service and art project coordinator, Su Legatt. The group gave feedback and suggestions as the artistic design process evolved. The final design incorporates many neighborhood and downtown features including: Veteran’s Memorial Bridge, Stave Church, Historic Log Cabin, a train, natural and recreational elements such as the river, trees, birds, fish, flowers and biking and canoeing along the riverfront. The project was funded by Moorhead Public Service with a contribution from the City of Moorhead.

## Shovel Ready: Business Development Sites

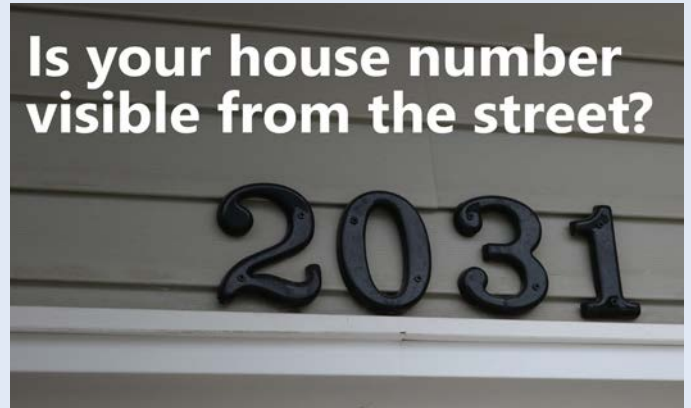
Moorhead recently received “Shovel Ready” certification status for a 197 acre site in the MCCARA Industrial Park. Shovel-ready sites give our community a competitive edge in attracting business startups, expansions, or relocations because the most time-consuming technical and regulatory aspects of development are already complete. MCCARA Industrial Park is located south of I-94 at the 34<sup>th</sup> Street Exit making it a premiere location within the FM Metro in close proximity to the Moorhead Airport.



## Safe Exchange Location

Do you buy or sell goods over the internet and need to meet with strangers to complete the transaction? You are now able to do that safely outside the new Joint Law Enforcement Center. The Safe Exchange site is located on the east side of the Joint Law Enforcement Center, 911 11 St. N. This location is monitored by 24 hour video surveillance and the building is staffed and open 24 hours a day. Please note that officers will not be assisting with these exchanges nor become involved in civil matters resulting from disputes over payment or quality, but the Safe Exchange Location offers an added layer of safety for those involved in online commerce.

Is your house number visible from the street?



Not only is this important to mail carriers and local delivery drivers, but also to our local fire and police department. Emergencies can strike when you least expect them, and having a visible house number will allow first responders to find your location faster.

## MATBUS



### NEW buses joining the MATBUS fleet

In Fall 2018, Moorhead MATBUS is putting two brand-new buses on the road. One of these buses was purchased to replace an older bus that reached the end of its lifespan, the other is an expansion vehicle. These additions will help MATBUS provide a more reliable vehicle for riders, as well as new

features. All new buses will include an automatic securement system that provides more independence for riders using wheelchairs.

### Quarter Days for Holiday Shopping

MATBUS will be offering a special rate for riders on prime shopping days this holiday season! On Black Friday and Small Business Saturday (November 23-24), plus every Saturday in December, you can ride MATBUS fixed route buses for just 25¢! Avoid cold cars and busy parking lots, and hop on a warm MATBUS vehicle during Quarter Days.

### 90-Day Youth Pass

MATBUS offers a great deal for youth all year round! With the new 90-Day Youth Pass, grades K-12 can ride MATBUS fixed routes for only \$26. That's three months of transportation for the price of one! The pass is an excellent way to teach young adults to become more independent. Passes are sold at the Ground Transportation Center, 502 N.P. Avenue in Fargo.

### Calendar

November 22 – Thanksgiving Day – No Bus Service

November 23-24 and Saturdays in December – Quarter Days – Ride the bus for just 25 cents!

December 24 – Christmas Eve – All MATBUS routes ending early

December 25 – Christmas Day – No Bus Service

January 1 – New Year's Day – No Bus Service

**Contact MATBUS:** call 701.232.7500 or visit [MATBUS.com](http://MATBUS.com)

## Snow Removal

Before we know it, snow will fly, making way for fun winter activities. With the snow comes some added responsibility. Moorhead City Code requires that residents clear snow and ice from their portion of sidewalk by 9 pm after it stops snowing.

### A few shoveling tips:

- If you live on a corner, all sidewalks must be cleared, including the crosswalk approaches
- Do not shovel snow onto neighboring properties or into the street
- Make arrangements with a neighbor or a snow removal service to care for your property if you're going to be out of town or unable to shovel your walkway in a timely manner

- Lend a helping hand; help out your neighbors if health issues become obstacles

If your sidewalk is reported for snow or ice, inspectors will leave a sign posted on the property with a short compliance timeline as a courtesy reminder. If, however, your sidewalk is not cleared by the compliance date, the City will hire snow removal for you. The property owner will be charged for the cost of the snow removal service plus an administrative penalty of \$100. Further violations at the same property in the same season will result in additional penalty charges without a compliance period.

If you would like to report an unshoveled walkway you can make a report on the City

website or call Neighborhood Services at 218.299.5434.

Let's all do our part to have a fun and safe winter!



## Vacation House Checks

Enjoy time away without the worry! Police Volunteers check the security of your home while you are away. Request this free service any time you are out of town for an extended period of time. Submit requests at [moorheadpolice.com](http://moorheadpolice.com) or by calling 218.299.5120

## Holiday Garbage Collection

Following a holiday, garbage collection begins at 4 am. To ensure collection, place garbage out the night before. Garbage may be collected later in the day due to the double route.



**Next business day**

When a holiday falls on a Friday, garbage is picked up the following Monday. When a holiday falls on a Monday, garbage is picked up on Tuesday. Sign up for eNotifications (choose 'Service Alerts') for email reminders on holiday garbage schedule. The Garbage Transfer Station and Compost Site are closed on holidays.

## Winter Park Fun in Moorhead

Don't wish winter away just yet – Moorhead parks are designed for family fun all year round.

This season, all of our outdoor rink locations have brand new hockey and leisure rink areas! We are also adding new rinks to Stonemill Park. Ice rinks will open for the season on Monday, December 17. Hansmann, Morningside, Lamb, Riverview Estates, Ridgewood, South, and Village Green parks have warming houses open M-F from 4-8 pm and Saturday and Sunday from 1-8 pm. Rinks at Alm, Voll, and Stonemill Park will also open on December 17, but do not



have warming houses. All times are weather-permitting.

### M.B. Johnson Park is the place to be on the weekends:

Rent cross country skis or snowshoes and travel our groomed trails!

Rentals will be available December 15 – February 24 at The M.B. Johnson Park small shelter.

Saturdays: 10 am – 4:30 pm

Sundays: Noon – 4:30 pm

Please keep in mind that weather determines when trails can be groomed. Grooming updates can be found at [moorheadparks.com](http://moorheadparks.com)

### Fees (Cash and check only):

Ski Package - \$12 (includes skis, boots, poles)

Skis - \$5 Boots - \$5 Poles - \$2

Family Ski Rental - \$35

Snowshoes - \$10

Family Snowshoe Rental - \$20

(Family pack includes parents/guardians and their children, there is no limit.)

## Good to Know! - About Your Library

### How to Get a Library Card

Unlock access to thousands of books, movies and more free of charge, plus a vast collection of downloadable eBooks and eAudiobooks. Getting a library card is simple:

1. Anyone who lives within Lake Agassiz Regional Library's seven county region can get a card. This includes Becker, Clay, Clearwater, Mahnomon, Norman, Polk, and Wilkin counties. Plus, Fargo and West Fargo residents are eligible for cards, as long as they have a Fargo or West Fargo Public Library card.
2. To sign up for a card, visit the library and bring proof of your address, which could be a driver's license, lease agreement, bill, or some other official paperwork with the home address on it.

### Ask a Techspert

Do you need help using your new phone, tablet or computer? Are you interested in researching your family history, or want to sign up for social media? The Moorhead Library hosts a weekly technology help session on Mondays at 2 pm. Bring your technology questions and librarians will be available to help, free of charge.

### Books, Movies and More

The Moorhead Public Library offers a robust collection of books,

audiobooks, DVDs, magazines, eBooks, eAudiobooks and more, all available to borrow free of charge. New titles are added daily.

### Support the Library

Tax-deductible donations to Lake Agassiz Regional Library help us purchase books, movies, eBooks and more. Plus, your contributions will help support new technology, provide exciting events and so much more. Donate at the library or at [www.larl.org/donate](http://www.larl.org/donate).

### Wireless Printing | Library

Send your documents to the library to print from anywhere using your phone, tablet or computer! Visit the library within 48 hours to pick up your documents, which will be printed when you arrive at the library. For more information, visit [www.larl.org/wirelessprinting](http://www.larl.org/wirelessprinting). Plus, take advantage of the library's free wireless internet access and public computers.



### Moorhead Library

118 5 St S | Moorhead, MN | 218.233.7594  
[larl.org](http://larl.org)

Monday – Thursday, 9 am – 9 pm

Friday & Saturday, 10 am – 6 pm

Sunday, closed

## Events

### Book Blizzard | Library

The Moorhead Public Library will kick off the new year with its annual reading program for adults, Book Blizzard. Read or listen to four books or complete reading-related challenges to win prizes. This is a great way to keep your reading resolutions! More information: [www.larl.org/bookblizzard](http://www.larl.org/bookblizzard)

### Events + Programs for Kids | Library

The library offers several free kid-friendly events free of charge. Join the fun!

#### Storytime

Tuesdays at 6:30 pm, Wednesdays at 10:30 am and the second Saturday of the month at 11 am

Stories, songs, and poems on a weekly theme plus a craft at the end! Program runs about an hour.

#### Baby Bounce

Thursdays at 10:15 am

Songs, stories, and action poems for infants through preschoolers and their caregivers. Program runs about a half hour including playtime and chatting with other caregivers.

#### LEGO Club

Fourth Saturday of the month from 2 – 4 pm

All ages and abilities are welcome to come make their own Lego creation at our Lego Club. Supplies provided to build, but make sure to bring your imagination!

### Book Clubs | Library

Join a book club to connect with fellow readers and discover new books. The Moorhead Public Library offers several book clubs.

#### Outlander Book Club

The Outlander Book Club, hosted by the Friends of the Moorhead Library, meets the second Wednesday of each month at 7 p.m.

#### Books and Beers Book Club

Books and Beers is a book club focusing on exciting and approachable

non-fiction titles, both new and old, sponsored by the Friends of the Moorhead Library, and the Historical and Cultural Society of Clay County. The group meets every other month at various local bars.

#### Classy and Trashy Book Club

This book club runs the gamut of the library's collection and meets monthly.

#### Pop Lit Book Club

Join this group for buzzy conversations about popular titles. The Pop Lit Book Club meets monthly.

### Pangea—Cultivate Our Cultures Hjemkomst Center

**Saturday, November 17, 10 am – 4pm**

Join us for the largest free, family-friendly celebration of cultural diversity in the community. In fact, one of the few festivals of its size and kind in the Midwest, Pangea marks its 24th year of highlighting the global roots of the local Fargo-Moorhead community and continues to offer visitors a chance to immerse themselves in the region's vibrant diversity through food, music, arts, crafts, stories, and children's activities. Bus service will be available.

### Holiday Kickoff/Tree Lighting

**Moorhead Center Mall**

**November 20, 5 pm**

Greet the festive season as we light the City of Moorhead's Holiday Tree! Enjoy refreshments and the Moorhead High School Carolers.

### Xcel Energy Holiday Lights Parade

**Downtown Moorhead**

**November 20, 6:30 pm**

A magical evening with hundreds of participants that feature spectacularly lit parade floats, marching units, and equestrian entries.

### Skate with Santa

**Moorhead Sports Center**

**December 9, 2:15 – 4:15 pm**

Lace up your skates and enjoy free open skate with Santa! Free hot chocolate and cookies will be served. Skate rental will be available (limited sizes).

### Sleigh Rides

**Hjemkomst Center**

**December 26-28, 1 – 4 pm**

Take a scenic sleigh ride through beautiful Viking Ship Park! The cost is \$4.00 per person (children 2 and under free). Tickets are available at the door on a first come, first served basis. No reservations or advanced sales. Concessions will be available for purchase.

### Frostival

**Hjemkomst Center & other locations**

**January 26, 10:00 am – 4:30 pm**

Embrace the cool of winter with 2 days of outdoor and indoor events! Moorhead is excited to host several activities at the Hjemkomst Center, including the Moorhead Business Association's Snow Sculpture Contest, Snowga (yoga in the snow), Dance Attack, the Moorhead Kiwanis Chili Feed & more, River Keepers Winter Scavenger Hunt, and many more family-friendly events! Stop by the Frozen Fortress for a day of winter fun!

Register for the Adult Coed Kickball Tournament at M.B. Johnson and the "Ice Bowl" Disc Golf Tournament at Woodlawn Park, or put a team together or compete individually in the many North of Normal Games planned in our community.

For a complete list of activities and events throughout the Fargo, Moorhead, and West Fargo area, visit [frostival.com](http://frostival.com).

### One Enchanted Evening

**Hjemkomst Center**

**February 23, 6:00 – 8:30 pm**

This special evening for youth, ages 4-12 and their family, features a grand march, dancing, refreshments, photos, and memories to last a lifetime. Semi-formal dress is encouraged. All are invited to attend the grand march, however, only ticketed couples will be allowed to stay afterwards for the dance. Tickets are \$12.00 per person, and will be available for purchase beginning February 4. A limited number of tickets will be available. Registration deadline: February 14.

## Events *continued from page 6*

### **Celtic Festival Hjemkomst Center March 9, 10 am – 4 pm**

The annual Celtic Festival is a celebration of the rich culture of the seven Celtic Nations, featuring the intriguing history, arts and traditions of Brittany, Cornwall, Isle of Man, Galicia, Ireland, Scotland and Wales. Take in the sights, sounds, and tastes of the Celtic heritage with dancing, music, and authentic Celtic food. Children and adults alike can learn about traditions of the seven Celtic nations through hands-on activities and table displays. All exhibits, performances, and activities are free with the exception of an Activity Passport (\$4). The Activity Passport is the key to many of the craft stations and once completed can be turned in for a prize.

The Celtic Festival is hosted by the Fargo Park District and Moorhead Parks and Recreation. Support for this project is provided by the cities of Fargo, Moorhead, and West Fargo, through The Arts Partnership. Bus service will be available.

## Exhibits at the Hjemkomst


**War, Flu, & Fear: World War I and Clay County**  
*Through January, 2021*

**RACE: Are We So Different?**  
*November 8 through  
May 7, 2019*

**Beyond Bollywood:  
Indian Americans  
Shape the Nation**  
*October 27 through  
March 31, 2019*



**Suitably Attired:  
Selections from the Emily P. Reynolds Historic Costume  
Collection**  
*December 4 through March 5, 2019*



**Historical and Cultural Society of Clay County (HSCC) Hjemkomst Center**  
202 1 Ave N | Moorhead, MN | 218.299.5511  
[hscconline.org](http://hscconline.org)

Monday – Saturday, 9 am – 5 pm  
Sunday, noon – 5 pm  
Tuesday evenings, 5 – 8 pm (Apr – Dec)



**Comstock House**  
506 8 St S  
Moorhead, MN  
218.291.4211

[comstockhouse@mnhs.org](mailto:comstockhouse@mnhs.org)

Winter hours by appointment. Call for group tours and school field trips.



**FM Holiday Lights  
Parade  
November 20  
6:30 pm**



# Coffee with the Mayor

Join Mayor Del Rae Williams as she completes her term as Mayor of Moorhead.

November 21 and December 19  
10 am – noon and 7 – 9 pm  
Moorhead Center Mall Atrium  
500 Center Ave

Free and open to the public. Coffee provided.



City of Moorhead  
500 Center Ave  
PO Box 779  
Moorhead, MN 56560

PRSR STD  
U.S. POSTAGE  
PAID  
PERMIT NO. 478  
MOORHEAD, MN 56560

ECRWSS  
POSTAL CUSTOMER

 [facebook.com/cityofmoorhead](https://facebook.com/cityofmoorhead)

 [@cityofmoorhead](https://twitter.com/cityofmoorhead)  
[#MoorheadProud](https://twitter.com/cityofmoorhead)

## City Calendar

[cityofmoorhead.com/calendar](https://cityofmoorhead.com/calendar)

### November

- 6 General Election Day | [cityofmoorhead.com/voting](https://cityofmoorhead.com/voting)
- 12 Veterans Day (Observed) | City offices closed | no garbage\*
- 16 Curbside pick-up & drop-off yard waste ends
- 17 Pangea: Cultivate Our Cultures
- 20 Holiday Kickoff | Tree Lighting
- 20 Holiday Lights Parade
- 22 Thanksgiving Day | City offices closed | no garbage\*

### December

- 9 Skate with Santa
- 24 Christmas Eve | City offices closed | garbage pickup
- 25 Christmas Day | City offices closed | no garbage\*
- 26-28 Sleigh Rides

### January

- 1 New Years Day | City offices closed | no garbage\*
- 8-19 Christmas Tree pick-up
- 21 Martin Luther King Jr. Day | City offices closed | no garbage\*
- 26 Frostival

### February

- 18 President's Day | City offices closed | no garbage\*
- 23 One Enchanted Evening

### March

- 9 Celtic Festival

\*Garbage collection will begin at 4 am on the next business day following the holiday.

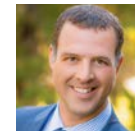


## Moorhead Mayor and Council



### Mayor

Del Rae Williams  
218.299.5307



### Ward 3

Joel Paulsen  
218.299.5544



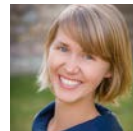
### Ward 1

Mari Dailey  
218.299.5549



### Ward 3

Brenda Elmer  
218.299.5548



### Ward 1

Sara Watson Curry  
218.299.5541



### Ward 4

Steve Gehrtz  
218.299.5542



### Ward 2

Heidi Durand  
701.541.2684



### Ward 4

Chuck Hendrickson  
218.299.5545

City Council Meetings are held the 2nd and 4th Mondays of each month at 5:30 pm in the Council Chambers, 1st Floor, City Hall.

## City Services

Administration (general information)	218.299.5166
Engineering	218.299.5390
Community Development	218.299.5434
Moorhead Public Library	218.233.7594
Police (non-emergency)	218.299.5120
Fire (non-emergency)	218.299.5298
Parks and Recreation	218.299.5340
Public Works	218.299.5422
Moorhead Public Service (MPS)	218.477.8000

**Emergency 911**



218.299.5166



500 Center Ave, Moorhead, MN 56560



[cityofmoorhead.com](https://cityofmoorhead.com)