

FM Metro Area 2017 Bikeways Map



Fargo | West Fargo | Moorhead | Dilworth



Prepared by:
FM Metropolitan Council of Governments
Case Plaza, Suite 232
One North 2nd Street, Fargo, ND 58102
www.fmmetrocog.org | 701.232.3242

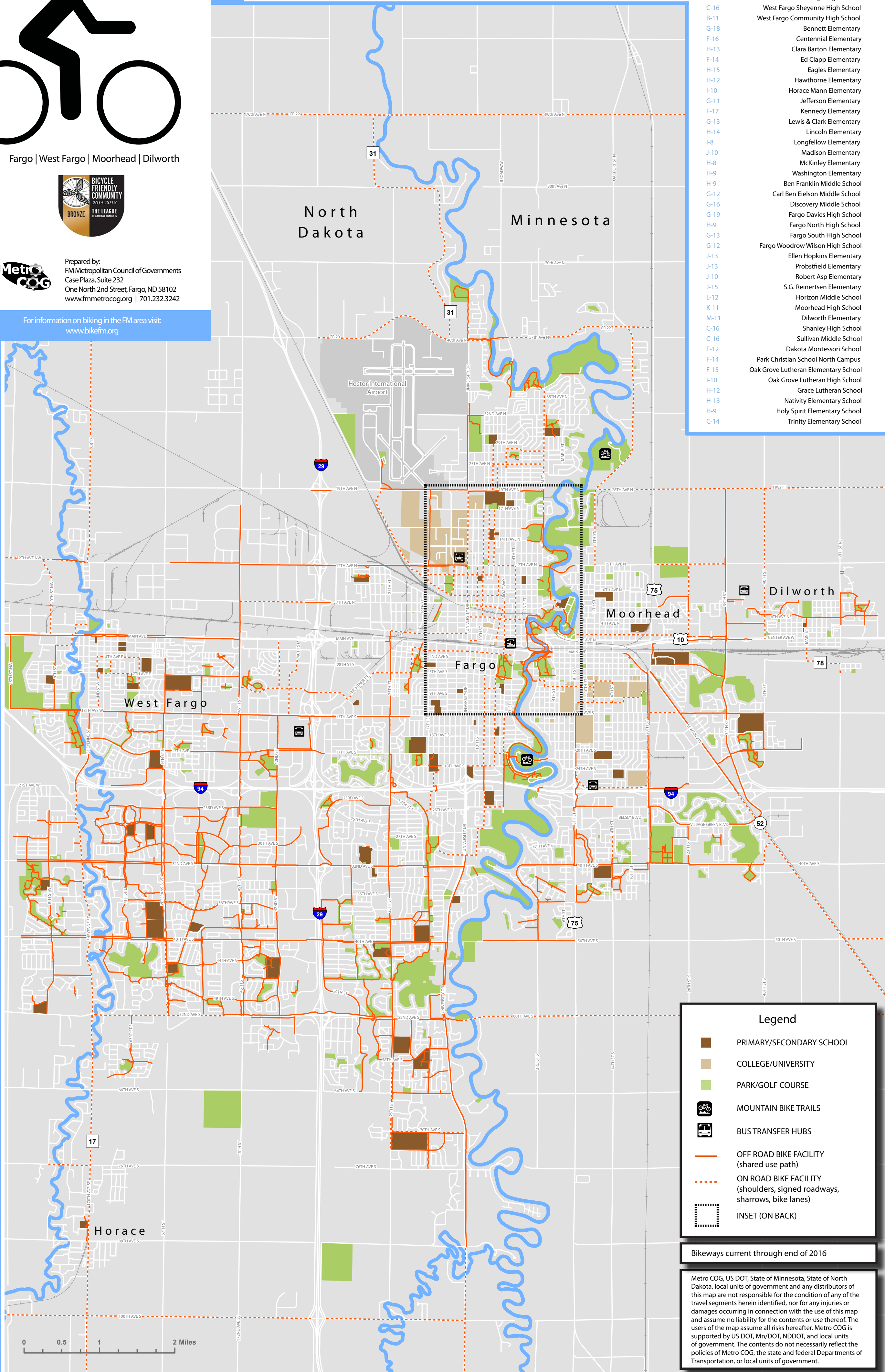
For information on biking in the FM area visit:
www.bikefm.org

Points of interest

E-13	West Acres Mall	I-11	Memorial Park (Mhd)	G-9/10	NDSU (Main Campus)
I-11	Moorhead Center Mall	H-11	GTC (MATBUS Station)	H-11	NDSU (downtown)
I-11	Main Avenue Bridge	D-14	Anderson Park (Softball)	J/K-12	MSUM
I-11	Hjemkomst Center	H-11	Fargo City Hall	I/J-12/13	Concordia College
H-16	Bluestem (Trollwood)	I-11	Moorhead City Hall	K-13	M State
K15	100 Acre Park (Mhd)	C-12	West Fargo City Hall	G-16/17	Rose Creek Golf Course
A-11/12	Fairgrounds (WF)	M-11	Dilworth City Hall	B/C-16	Osgood Golf Course
E-14	Red River Zoo	H-12	Cass County Courthouse	F-13	PrairieWood Golf Course
H-12	Island Park	J-10	Clay County Courthouse	H/I-14	Fargo Country Club
I-13	Lindenwood Park	I-11	Sanford Health (hospital)	L-12	Meadows Golf Course
I-13	Gooseberry Park	H-13	Essentia/Sanford (S.Univ)	L-14	Village Green Golf Course
I-12	Woodlawn Park	F-15	Essentia Health (hospital)	I/J-9	Moorhead Country Club
I-11	Oak Grove Park	F/G-15	Sanford Health (S. Fargo)		

Schools

B-11	Clayton A. Lodoen Kindergarten Center
C-16	Osgood Kindergarten Center
A-15	Aurora Elementary
C-12	Eastwood Elementary
B-14	Freedom Elementary
B-21	Horace Elementary
C-16	Independence Elementary
C-11	L.E. Berger Elementary
A-17	Legacy Elementary
B-12	South Elementary
A-12	Westside Elementary
C-13	Cheney Middle School
C-15	Liberty Middle School
C-12	West Fargo High School
C-16	West Fargo Sheyenne High School
B-11	West Fargo Community High School
G-18	Bennett Elementary
F-16	Centennial Elementary
H-13	Clara Barton Elementary
F-14	Ed Clapp Elementary
H-15	Eagles Elementary
H-12	Hawthorne Elementary
I-10	Horace Mann Elementary
G-11	Jefferson Elementary
F-17	Kennedy Elementary
G-13	Lewis & Clark Elementary
H-14	Lincoln Elementary
I-8	Longfellow Elementary
J-10	Madison Elementary
H-8	McKinley Elementary
H-9	Washington Elementary
H-9	Ben Franklin Middle School
G-12	Carl Ben Eielson Middle School
G-16	Discovery Middle School
G-19	Fargo Davies High School
H-9	Fargo North High School
G-13	Fargo South High School
G-12	Fargo Woodrow Wilson High School
J-13	Ellen Hopkins Elementary
J-13	Probstfield Elementary
J-10	Robert Asp Elementary
J-15	S.G. Reinertsen Elementary
L-12	Horizon Middle School
K-11	Moorhead High School
M-11	Dilworth Elementary
C-16	Shanley High School
C-16	Sullivan Middle School
F-12	Dakota Montessori School
F-14	Park Christian School North Campus
F-15	Oak Grove Lutheran Elementary School
I-10	Oak Grove Lutheran High School
H-12	Grace Lutheran School
H-13	Nativity Elementary School
H-9	Holy Spirit Elementary School
C-14	Trinity Elementary School



Legend

- PRIMARY/SECONDARY SCHOOL
- COLLEGE/UNIVERSITY
- PARK/GOLF COURSE
- MOUNTAIN BIKE TRAILS
- BUS TRANSFER HUBS
- OFF ROAD BIKE FACILITY (shared use path)
- ON ROAD BIKE FACILITY (shoulders, signed roadways, sharrows, bike lanes)
- INSET (ON BACK)

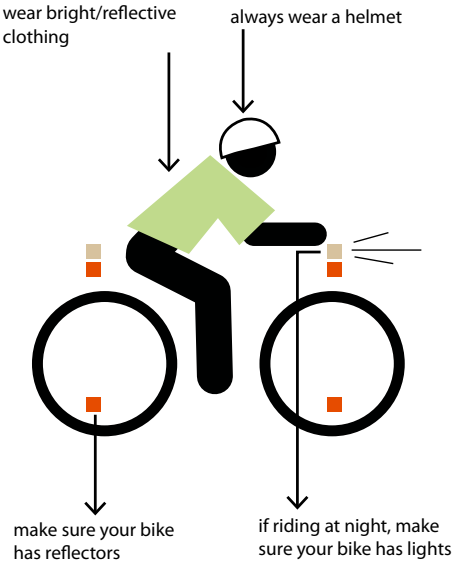
Bikeways current through end of 2016

Metro COG, US DOT, State of Minnesota, State of North Dakota, local units of government and any distributors of this map are not responsible for the condition of any of the travel segments herein identified, nor for any injuries or damages occurring in connection with the use of this map and assume no liability for the contents or use thereof. The users of the map assume all risks hereafter. Metro COG is supported by US DOT, Mn/DOT, NDDOT, and local units of government. The contents do not necessarily reflect the policies of Metro COG, the state and federal Departments of Transportation, or local units of government.



Bike Safety:

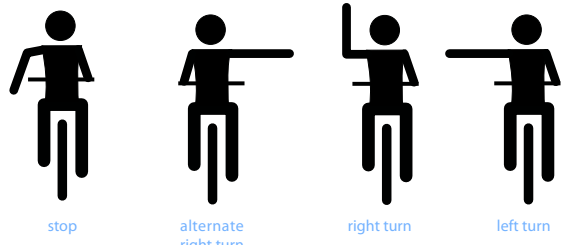
Bicyclists share the same privileges and responsibilities as drivers of motor vehicles, and must obey all traffic control signs and signals.



* You can never have too many reflectors or lights on your bike. The more you have the more safe you are as a bicyclist

On-road bicycling:

must know biking symbols:



For more bike safety information:
 + www.bikefm.org
 + www.sharetheroadmn.org

FM Signs:

In the FM Area, there are signs to be aware of as a bicyclist and as a driver to ensure a safe experience for everyone.

Sidewalks:
 Use extra caution when riding on sidewalks, especially at crossings/intersections and around pedestrians

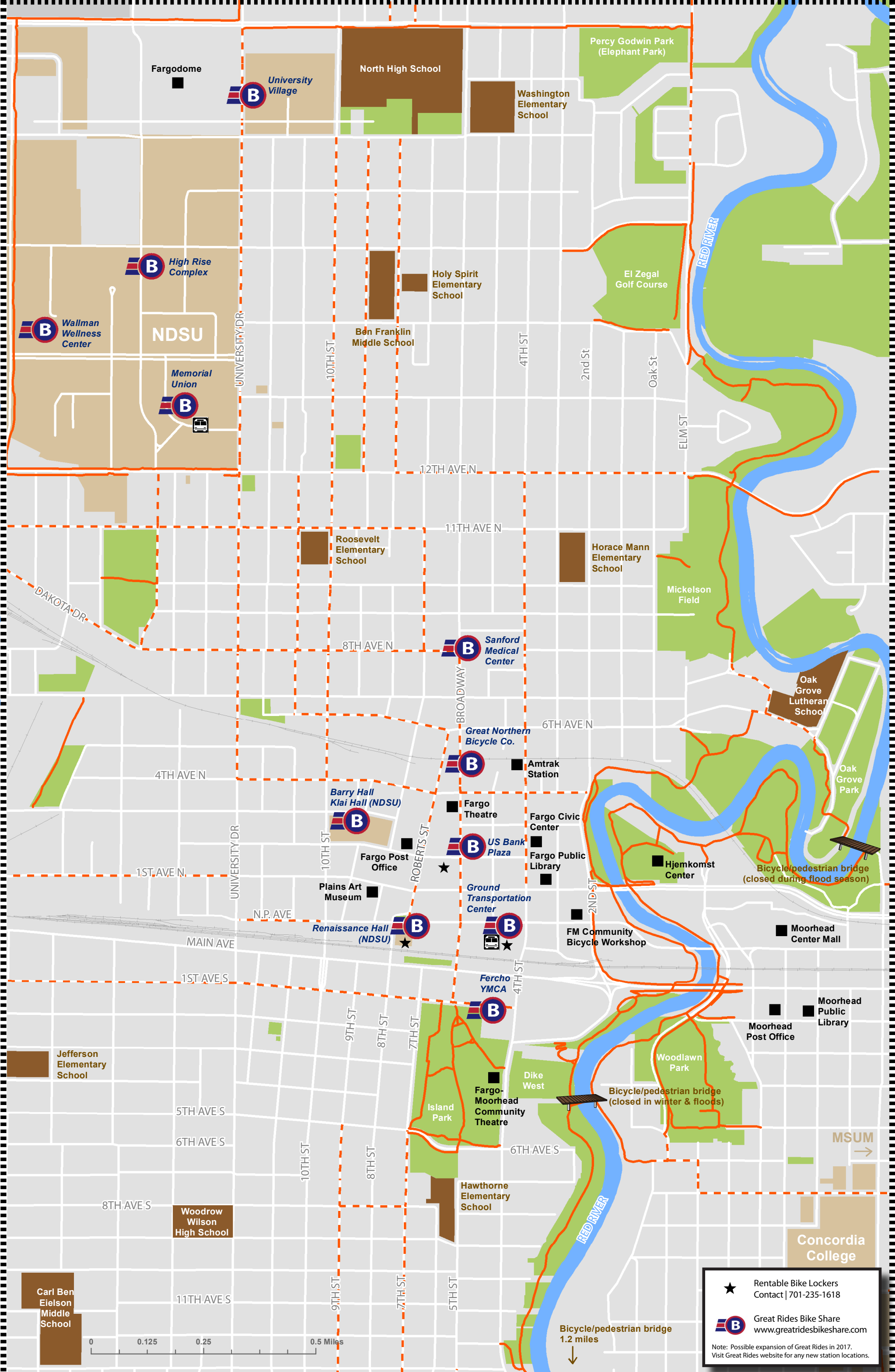
Sharrow:
 share the road with vehicles

Bike lane at an intersection:
 cars yield to bicycles when merging over dashed line

Bike lane:
 bicycles only, cars keep out!

On-road Shoulder:
 bicycles have a minimum of 4' on a designated shoulder bike facility

min. 4'



- "Alternate left turn" if you cannot get into the left lane in time.
- "Left turn"
- Stay away from the curbs as you approach an intersection. A car may cut you off.
- Stay 4 feet away from parked cars.
- Before crossing a street at a roundabout, scan both ahead of you and to the left towards oncoming traffic.
- At roundabouts, bicycles merge with cars and use the whole lane. Pedestrians cross at crosswalks.
- Dashed lines indicate the car may enter the bike lane to turn but must yield to the bicycles.
- In a bike lane travel with the flow of traffic, not against it.
- Do not pass a truck or a bus on their right side. This is a blind spot for them and they may run you off the road.
- Travel in bike lanes; do not weave in and out of parking areas.
- Take precaution as you approach an alley, intersection, and driveway and make sure that cars can see you, especially if the drivers view is blocked by an object.
- Make sure you have a clear view towards on-coming traffic as you approach an intersection.
- Riding along a shoulder, you always travel with the flow of traffic.
- Follow all traffic signage.
- Before crossing a street on a bike path, scan in all directions.
- Advise others in front of you as you pass them.
- On a shared use path, stay to the right side of the bikeway unless you are passing.