

Moorhead Minnesota CITY INSIGHTS

WWW.CITYOFMOORHEAD.COM

SPRING 2013

MOORHEAD KICKS OFF RIVER CORRIDOR STUDY

As a result of recent floods, the City of Moorhead initiated several flood mitigation projects. One of the most visible actions is the purchase of flood-prone properties along the river. After purchasing over 200 homes, the City received questions and concerns about the future of these areas, so the City requested the Metropolitan Council of Governments (Metro COG) to develop a planning study to identify the issues, needs, and opportunities along the River Corridor.

The River Corridor Study will develop policy and recommendations to address identified needs, issues and opportunities along the River Corridor. The River Corridor study consists of three (3) phases:

- **PHASE I – NEEDS AND ISSUES REPORT** - Metro COG will present a Needs and Issues Report to the City Council documenting existing conditions, summarizing public input, outlining limitations along the River Corridor, and identifying the needs and opportunities identified by the public, residents, and City staff.
- **PHASE II –ALTERNATIVE POLICIES & STRATEGIES REPORT** - Metro COG and the City will develop a second report establishing a set of policy and strategy alternatives that could be used to address the issues, needs and opportunities identified along the River Corridor.
- **PHASE III - RECOMMENDATIONS AND IMPLEMENTATION PLAN** - A final River Corridor Plan will be developed outlining recommendations and strategies for improvements and maintenance issues along the River Corridor. The final Plan will include an implementation strategy for preferred enhancements and programs to be completed in the years ahead.

[Continue on page 2](#)

INSIDE:

River Corridor Study (continued)	2
Flood Mitigation Projects	2
Tree Planting Policy Change	3
Clean-Up Week	3
Thrifty Watts	3
Flood Information	4
CodeRED	5
Property Tax Rebate	5
Senior Connections	6
Metro Area Transit	6
Parks and Recreation	7
New Program: Bocce League	7
Hjemkomst Center Spring Exhibits	7
City Calendar	8
MATBUS: Two cities, one system	8

CITY OFFICIALS

Mark Voxland, MAYOR
218.299.5307

FIRST WARD

Nancy Otto
218.233.2834

Luther Stueland
218.287.5250

SECOND WARD

Mark Altenburg
218.299.5547

Heidi Durand
218.443.5742

THIRD WARD

Brenda Elmer
218.299.5548

Mike Hulett
218.299.5544

FOURTH WARD

Mark Hintermeyer
218.236.6292

Steve Gehrtz
218.299.5542

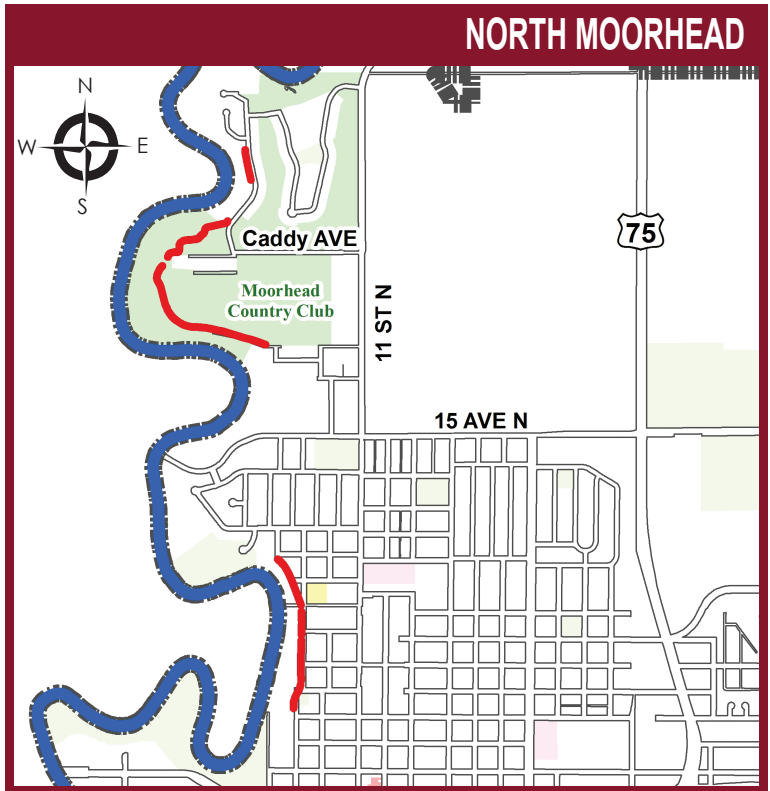
In January, Metro COG and the City held a public meeting, took a community-wide survey, and worked with the Red River Citizens Advisory Committee to support the development of Phase I of the River Corridor Study.

The public comments shared one common theme: the River Corridor should be developed as a public resource open for year around activities, with consideration for adjacent private property. It was generally felt that a multi-use trail network and a nearly continuous greenway for biking, walking, skiing and other non-motorized outdoor activities would benefit the City. The public also supports the development of facilities that can be used year round, such as parks and open space amenities, specialized sports facilities, and amenities for pedestrian, bicycle, and ski trails.



Metro COG and the City of Moorhead are currently completing the River Corridor Needs and Issues Report which will conclude Phase I, and also present a list of opportunities to be explored in more detail over the spring and early summer. Hopefully, a full version of the Needs and Issues Report will be ready for public review and presentation to the City Council in late March. At least two additional public input meetings on the River Corridor Study will be held between July and the end of 2013.

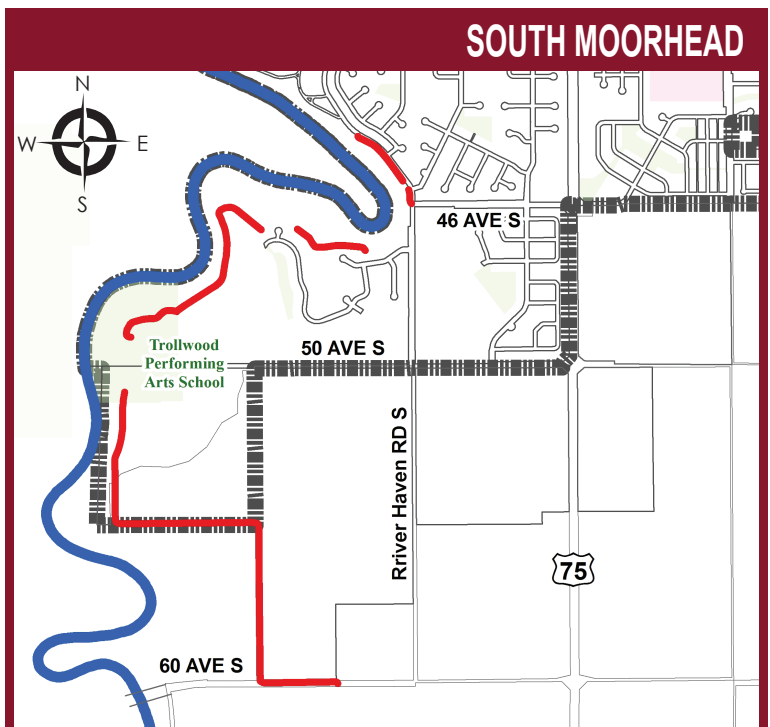
FLOOD MITIGATION PROJECTS

The maps below show the Flood Mitigation Projects to be constructed in 2013 in North and South Moorhead.





LEGEND

-  Levees
-  Moorhead City Limits



LEGEND

-  Levees
-  Moorhead City Limits

ADDITIONAL INFORMATION

If you are interested in being directly notified regarding future public input opportunities for the River Corridor Study, contact Kristie Leshovsky at the City of Moorhead at [218.299.5332](tel:218.299.5332) or planning@cityofmoorhead.com



TREE PLANTING POLICY CHANGE

Recently, a change was made to the Moorhead boulevard tree planting policy. The City Forestry department will now provide and plant all boulevard trees in the City. The most notable change is that the boulevard trees in new subdivisions will now be purchased and planted by the City. And, as has been done for the past decade, we will also continue to replace boulevard trees that were removed throughout the city.

Homeowners who are eligible for a replacement tree and those in the subdivisions where boulevard trees are going to be planted were sent a tree survey in January or February. The tree survey is a list of tree varieties that are used for boulevard tree planting. It is designed to get homeowner feedback on a tree preference for planting on the boulevard. The survey asks for three tree choices and to rank the most preferable. This data is then incorporated into the tree planting lists the crews use in the spring and summer.

If you happen to live in an older area of Moorhead and have a place on the boulevard where a tree could be planted, you can call the Forestry office (**218.299.5430**) and we will look into it. New subdivisions will have boulevard trees planted after the sidewalks are installed throughout the neighborhood and when the designated area is over 80% developed.

FOR MORE INFORMATION

If you have questions or want more information on tree planting, please call the Moorhead Forestry office at **218.299.5430**.

CLEAN-UP WEEK

MAY 6-10

Spring is on its way, and that means spring cleaning! Here are a few reminders for this year's Clean-Up Week:

- Please separate trash, appliances and tires; no more than two appliances per household.
- Do not throw computer monitors, television sets, lumber, concrete, building materials, batteries, paint, hazardous chemicals, oil or anti-freeze. There will be a disposal fee for items listed above.
- Trash placed at the curb **BEFORE** the start of Clean-Up Week will be collected and billed as a special pick-up at a \$15 minimum charge.

For more information and details about Clean-Up Week, call **218.299.5347** or visit **cleanupweek.com**

THRIFTY WATTS®



WOULD YOU LIKE TO REDUCE YOUR UTILITY BILL BY UP TO \$12 PER MONTH?

Then let us introduce you to "Thrifty Watts®"! Thrifty Watts® is a fairly new residential load management and energy conservation program offered by Moorhead Public Service (MPS). Thrifty Watts® allows MPS to cycle your central air conditioner, or both your central air conditioner and electric water heater, on and off during periods of high electric usage in return for a credit applied to your monthly utility bill.

There is NO COST TO YOU nor do you need to supply or purchase any special equipment.

WHO IS ELIGIBLE FOR THIS PROGRAM?

MPS' residential electric customers are eligible for Thrifty Watts®; however, dual-fuel customers already have these savings available to them through the Dual-Fuel Program, so dual-fuel customers are not eligible to participate in Thrifty Watts®.

WHAT ARE THE ADVANTAGES?

- By cycling the air conditioner you should notice very little, if any, change in your comfort level, but you will feel good about the credit applied to your monthly utility bill from MPS.
- MPS will credit your utility bill \$9/month during the summer months of June, July, and August for allowing MPS to cycle your central air conditioner.
- Receive an additional credit of \$3/month year-round by allowing MPS to also control your electric water heater.
- You will know that you are playing a significant role in helping MPS reduce the amount of higher-cost power purchased during peak electric usage periods.

HOW DO I PARTICIPATE?

Go to **www.mpsutility.com** and click on "Sign Up for Thrifty Watts®"!

FOR MORE INFORMATION

If you have additional questions, please visit our Web site at **www.mpsutility.com** or contact MPS' Energy Services Manager at **218.299.5225**.

FLOOD INFORMATION

FLOODPLAINS NATURAL & BENEFICIAL FUNCTIONS

A floodplain that is relatively undisturbed provides a wide range of benefits to both human and natural systems. In addition to aesthetic value, floodplains provide filtering of nutrients, natural erosion control and open space so further flood damage does not occur. Native plants are best suited for floodplains; they have a deep root system that resists erosion and stabilize the shoreline where turf grass has a shallow root system that commonly erodes.

PROPERTY INFORMATION

Lenders, Insurance Agents, Realtors, and citizens can call **218-299-5387** and speak with the City's Certified Floodplain Manager to obtain information on whether a property is or isn't within the Special Flood Hazard Area (SFHA). *Information about floodplain maps, flood insurance, flood plain permits and flood mitigation projects is also available on the Floodplain Information page on the City's website.* The Engineering Department maintains on file Flood Insurance Rate Maps (FIRMs), elevation certificates, Letters of Map Amendment, and other flood related information.

INTERACTIVE GIS MAPPING

The FIRM can be viewed on the City's Floodplain Info webpage by clicking on Floodplain Maps. This interactive GIS map utilizes easy address searching to locate a property and view the 100-year and 500-year floodplains. The map will help residents determine if a property is located in the floodplain.

FLOOD INSURANCE

FACTS

- Standard homeowner and commercial property insurance does not cover flood losses. Only flood insurance covers floods.
- If your property or structure is within the SFHA, also known as the 100-year floodplain, you will need to purchase flood insurance if you have a federally backed mortgage.
- Renters can purchase flood insurance for content coverage.

PREFERRED RATE POLICY INFORMATION FROM EMA

FEMA has extended the Preferred Risk Policy (PRP) Eligibility while they complete a study and analysis to develop an implementation strategy for the Biggert-Waters Flood Insurance Reform Act of 2012. Policies written as PRPs under the PRP Eligibility Extension may continue to be renewed as PRPs beyond the previous designated 2-year period.

For technical assistance regarding the continuation of the PRP Eligibility Extension, please contact:
Joe Cecil at **202. 212.2067**.

There is a 30 day waiting period on new flood insurance policies.

Any Moorhead resident can buy flood insurance. The City of Moorhead participates in FEMA's Community Rating System (CRS) Program which makes some residents eligible for a discount on flood insurance premiums. Ask your agent for more details.

EMERGENCY PREPARATION

Being prepared for a flood will not only help keep your family safe, it can also help minimize potential flood damage and accelerate recovery efforts.

In addition to purchasing flood insurance, you can protect your family by safeguarding your home and possessions, by developing a family disaster plan, and understanding your flood insurance policy. For more information on how to develop a family disaster plan visit the Floodplain Information page on the City's website.

FLOOD SAFETY

The following common sense guidelines can help protect you from the dangers of flooding.

- Do not walk through flowing water.
- Do not drive through a flooded area. A car can easily be carried away in just two feet of water.
- Stay away from power lines and electrical wires.
- If your home is about to be flooded, contact Moorhead Public Service at 299.5400 (after hours 299.5418) to have your power turned off and the City of Moorhead at 299.5386 to inform staff that the sewer has been plugged.
- Be alert to gas leaks. If you smell gas, report it to Xcel Energy at 1.800.895.2999.
- Keep children away from flood waters, ditches, culverts, and storm drains.
- Clean everything that has been wet. Flood waters may be contaminated.
- Look out for animals. Small animals that have been flooded out of their home may seek shelter in yours.
- Do not use gas engines, such as generators, or charcoal fires indoors during power outages. Carbon monoxide exhaust buildup kills.

ADDITIONAL INFORMATION

More detailed information regarding flood related issues are available at

- www.cityofmoorhead.com/the_city.floodplain.asp
- Wastewater Department 2121 28th St N
- Moorhead Floodplain Information 218.299.5387
- Moorhead Public Library 218.233.7594
- www.floodsmart.gov

CodeRED

Receive emergency information on your phone by signing up for the CodeRED system. To learn more, visit cityofmoorhead.com and click on the CodeRED icon.



WHAT IS CodeRED?

CodeRED is a community notification system that will call the phone number(s) you enter into the system when there is an emergency situation or critical community alert such as a flood, evacuation notice, a boil water notice, or missing child alert.

DOES IT COST ANYTHING FOR ME TO SIGN UP?

No, the subscription has already been purchased for the entire city.

SIGNING UP FOR CodeRED IS EASY.

1. Go to www.cityofmoorhead.com and click on the CodeRED logo.
2. Click on the text that says "Click here to sign up for CodeRED."
3. Complete the electronic form. You may select to receive any or all of the following: tornado, severe thunderstorm and flash flood warning.

If you do not have Internet access or you need assistance, please call **218.299.5305** and we will sign you up.

PROPERTY TAX REBATE

HOW DOES THE NEW HOME CONSTRUCTION REBATE WORK?

A new home for which construction starts between January 1, 2012 and December 31, 2014 is eligible for a two-year property tax rebate. There is no minimum or maximum construction limit, and land value is included in the rebate calculation. Special function levies are not included in the rebate.

HOW DOES THE EXISTING HOME OR APARTMENT REMODELING REBATE WORK?

An increase in property value due to major remodeling is also eligible for the Make Moorhead Home Rebate Program during this same time period (2012 – 2014 construction start). The property value must increase by at least \$25,000 for homes and \$50,000 for apartment buildings in order to obtain a rebate of the value increase for two years. Updates or improvements such as new

flooring, mechanical systems, lighting or basement remodeling may not measurably increase your property value. Substantial kitchen or bathroom renovations or additions to existing structures are some of the improvements that may significantly increase property value. The City Assessor's staff will evaluate this based on the building permit and possibly a site visit.

IF I MAKE IMPROVEMENTS TO MY HOME THAT DO NOT REQUIRE A BUILDING PERMIT, CAN I STILL GET THE REBATE?

Yes. In order to determine eligibility for the rebate, you must request a review of your property value by the City Assessor to determine whether the value increased enough to qualify.

DO I NEED TO APPLY?

Yes, but it's easy and automatic! The City will provide an application when you or your builder take out a building permit. Since the program was approved retroactively to include home construction that began on or after January 1, 2012, the City will send application materials to the individual who obtained the building permit for eligible building activity during that time period.

WHEN WILL I GET MY CHECK?

Tax payments are due as scheduled on **May 15** and **October 15** of each year, and the rebate of the eligible portion of the tax payments is scheduled to be refunded in December of each year of eligibility.

WILL I GET THE FULL AMOUNT THE SECOND YEAR IF CONSTRUCTION ON MY HOME STARTED AFTER JANUARY 1 BUT BEFORE AUGUST 31, 2012.?

No. Construction activity that occurred prior to September 1, 2012 is not eligible for the Clay County portion of the tax payments for either year of eligibility.

IF I SELL MY HOME DURING THE REBATE PERIOD, WHO GETS THE CHECK?

The rebate check will be made payable to the owner of record for the property at the time the rebate is processed. If you sell the property during the rebate term, you should specify distribution of this rebate as a provision of your sales agreement with the buyer.

FOR MORE INFORMATION

If you have any questions, contact the City Assessor's Office at **218.299.5310**.

SENIOR CONNECTIONS

Senior Connections, a division of Moorhead Parks and Recreation Department, opened its doors on April 12, 1999 at the Hjemkomst Center, 202 First Avenue North in Moorhead. Our mission is to provide a variety of educational and recreation based activities that best meet the interest of people in our community aged 50 and over.

The Senior Center provides various workshops, seminars, and classes. Topics include medical seminars, safety seminars, financial workshops, tax assistance as well as arts and entertainment. *The Center hours are Monday through Friday 8:00 to 4:30 with some nights and weekends.*

For information and schedules of upcoming events, Senior Connections provides a newsletter three times a year. To get on the newsletter mailing list, contact Julie at **218.299.5514**.

Nutrition Services Inc., provides senior meals through a contract with the West Central Area on Aging, with funding from the Federal Older American Act through the Minnesota Board of Aging. Senior meals are served **Monday through Friday at 11:45 AM.**

To reserve a meal, call one day in advance, between **10:00 AM and 12:30 PM.** Cost of meals is a suggested donation of \$4 for 60 and over and \$6 for anyone under 60.



Valentine's Day Senior Meals by Nutrition Services

METRO AREA TRANSIT

GET YOUR "CAN" ON MATBUS DURING EARTH WEEK

Celebrate Earth Week by using public transit (**April 22 - 27, 2013**). Riding MATBUS will only cost one aluminum can! Taking the MATBUS to work or school makes a big difference in conserving our natural resources. One bus carrying 50 people saves 32 gallons of gas in one day, which preserves the air we breathe and conserves fossil fuels.

So remember, reduce air pollution and conserve energy during Earth Week – get your "Can" on the bus! Proceeds from the collected cans will be donated to charity. Enter the drawing on the MATBUS vehicles or Ground Transportation Center for T-shirts to be given away during Earth Week. This promotional fare only applies to fixed route service.

YOU'VE ASKED AND WE'VE LISTENED!

MATBUS Evening Routes 7 and 8 in Moorhead, and many routes in Fargo, are now running one hour later--**until 11:15 p.m., Monday through Saturday.**

MATBUS also added a second bus on Route 2 in the afternoons from **2:30 to 6:30 p.m.,** Monday through Friday, during the MSUM academic year. This means a bus is traveling through MSUM campus every **15 minutes** with direct connections downtown onto Route 15 to West Acres and Route 13 to the NDSU campuses.

Be sure to check out the new shelters on the MSUM and Concordia campuses, which offer many new and innovative amenities, including evening illumination! College and university students at MSUM, M|State, Concordia and NDSU ride free on MATBUS by simply swiping their current student ID cards, thanks to a fee paid to MATBUS by the colleges.

Make sure to check out matbus.com, or search on Facebook and Twitter (**keyword – MATBUS**), to view our new maps and timetables.



matbus

PARKS AND RECREATION

CALENDAR OF EVENTS FOR SPRING

CELTIC FESTIVAL

WHEN: March 9
WHERE: Hjemkomst Center
TIME: 10:00 a.m. to 4:00 p.m.
COST: Free Admission

MOORHEAD ICE SHOW

WHEN: March 15, 16, 17
WHERE: Moorhead Sports Center
TIME: Friday & Sunday at 7:00p.m. | Sunday at 1:00 p.m.
COST: Adult (13 & older): \$6.50 | Youth (4-12): \$4.50

NEW PROGRAM: BOCCE LEAGUE!



Grab a partner and join the Parks and Recreation Bocce League! Bocce is a two-person game where teams attempt to outmaneuver their opponents to score the most points on a regulation court.

Bocce begins **May 29** and plays each Wednesday night through July 24. The first two weeks will be instructional with league play beginning on **June 12**. All equipment is provided including a team t-shirt! Team members must be 18 years of age to play.

ADDITIONAL INFORMATION

If you have more questions, check out the Parks and Recreation program brochure or call Del Larson at **701.238.2223**. Registration is required and cost is \$25 for a team consisting of two members and one substitute. Register at Moorhead Parks and Recreation today!

UPCOMING EVENTS

REGISTRATION IS NOW OPEN!

Moorhead residents received the Parks and Recreation program brochure in the mail in early February and registration is open for spring and summer programming.

Registration deadlines for popular programs like youth baseball are fast approaching! Get your little slugger registered **before March 13** to avoid late fees. Swimming lessons also fill up fast so register for outdoor swimming lessons soon, too.

If you don't have your hardcopy brochure, call the Parks office to have another one mailed to you, go online and view it at moorheadparks.com, or pick one up at Moorhead City Hall, Moorhead Sports Center, or Moorhead Library.

You can find us at 324 24th St S in the lobby of the Moorhead Sports Center, online at www.moorheadparks.com, or call us at **218.299.5340**.

HOTLINE

Call **218.236.0627** for program updates, special events, and weather information. The hotline is available 24/7 and is updated regularly.



Like Moorhead Parks and Recreation to stay up-to-date.

SPRING EXHIBITS AT THE HJEMKOMST CENTER

A WOMAN'S PERSPECTIVE ON RITUAL

February 1 - March 30

Local female literary, visual and performing artists explore the meaning of ritual in various mediums and exhibition venues.

LAND IN HER OWN NAME

February 6 - March 6

An exhibit based on Dr. Elaine Lindgren's book about women homesteaders of North Dakota. Learn of the joys and sorrows of these independent women who forged a new life on the wild prairie.

ELECTRIFYING MINNESOTA

March 13 - May 27

Imagine lighting your home with the flick of a switch for the first time! Electrifying Minnesota, an exhibit from the Bakken Museum and the Minnesota History Center, combines film, photography and hands-on activities to demonstrate the amazing ways electricity has shaped life in Minnesota.

MARCH

- 10 Daylight Savings Time Begins
- 17 St. Patrick's Day
- 26 Passover
- 31 Easter

APRIL

- 1 April Fools' Day
- 22 Earth Day
- 27 City Auction – 701.299.5422

MAY

- 6-10 ... Clean-Up Week
- 12 Mothers Day
- 15 Peace Officers Memorial Day
- 18 Armed Forces Day
- 27 Memorial Day – City Hall Closed

City of Moorhead
500 Center Avenue
P.O. Box 779
Moorhead, MN 56560

PRSRT STD
U.S. POSTAGE
PAID
PERMIT NO. 478
MOORHEAD, MN 56560

ECRWSS
RESIDENTIAL CUSTOMER

MATBUS: TWO CITIES, ONE SYSTEM

Metro Area Transit, or Matbus, serves Moorhead, Dilworth, Fargo and West Fargo led by Lori Van Beek, Moorhead Transit Manager, and Julie Bommelman, Fargo Transit Administrator, aided by a joint powers agreement and a coordinating board.

"We are pretty unique," says Lori. "The joint power agreement spells out how we share costs and how we work together." The coordinating board is a liaison between the transit managers and their respective elected officials.

Lori and Julie are equal managers and do a lot of coordinating. Policies and driver manuals are written together, they go out for bids together, even though there are separate contracts with each city. By sharing one contractor, the two cities have reduced staffing needs for training and supervision and share a larger workforce.

There is one fare structure and revenues are shared. A transit pass can be used anywhere in the system, but fares are separated based on ridership.

"More people are realizing the benefits of transit to the community's economy and environment. I see greater demands for transit, especially for an aging population with fewer resources available," said Lori. "Meeting the transportation needs of this growing group will be a challenge in the near future. Innovative approaches and partnerships will be even more needed."

Matbus uses advertising revenues from benches and inside and outside the buses to provide local match revenue for state and federal grants.

Lori Van Beek said Matbus is the largest transit provider in Minnesota and North Dakota outside the Twin Cities. Matbus ridership in 2012 was 2,071,932.

"The wheels on the bus go round
and round, round and round,
round and round.
The wheels on the bus go
round and round,
All through the town."

